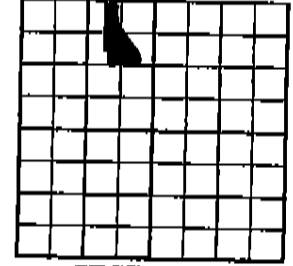
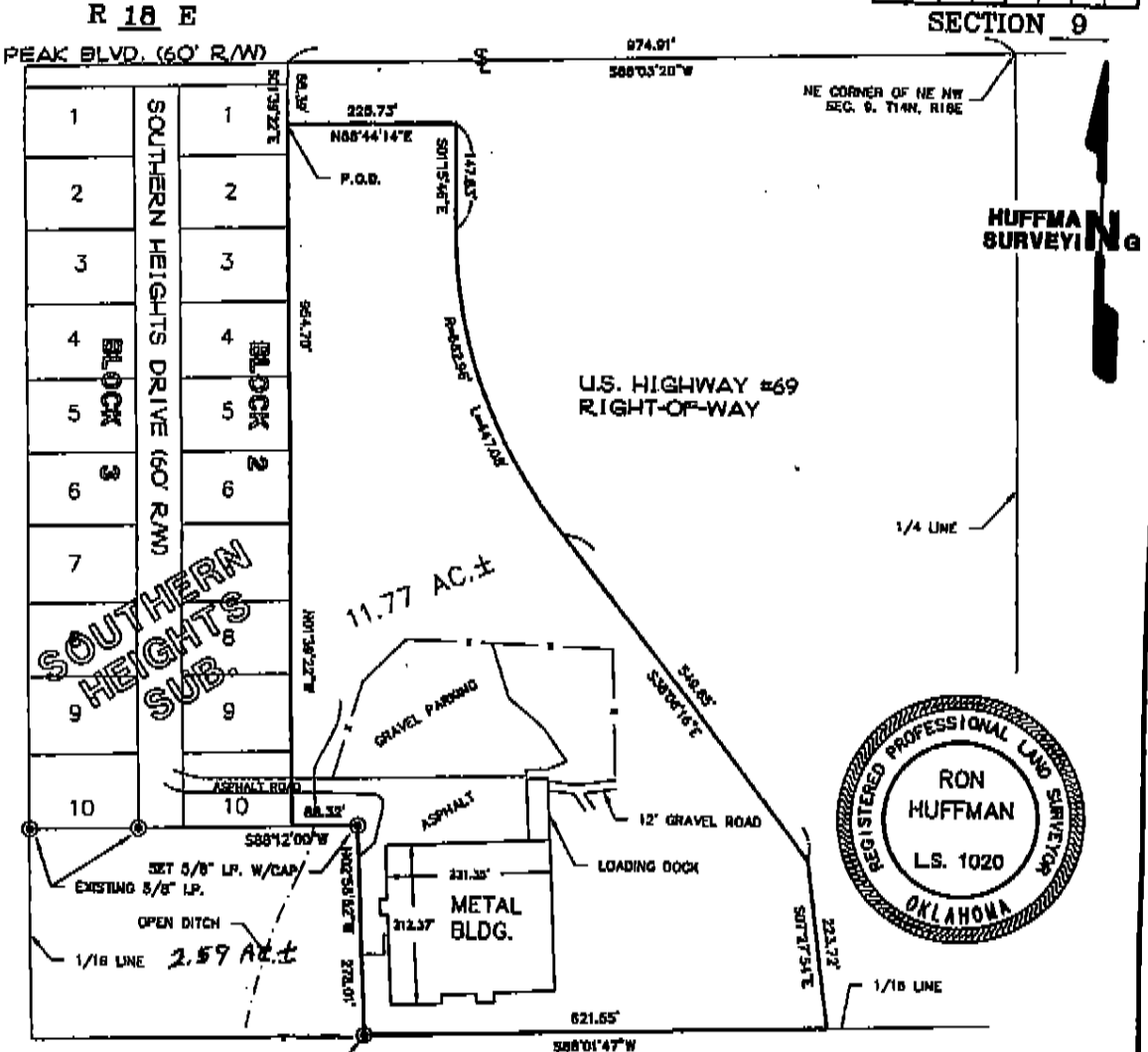


6	5	4	3	2	1
7	8	9	10	11	12
18	17	16	15	14	13
19	20	21	22	23	24
30	29	28	27	26	25
31	32	33	34	35	36

PLAT OF SURVEY



SECTION 9



HUFFMAN SURVEYING



A tract of land situated in the NE 1/4 of the NW 1/4 of Section 9, T14N, R18E, of the 1836 M., Muskogee County, State of Oklahoma, more particularly described as follows: Commencing at the Northeast Corner of said NE 1/4 NW 1/4; thence S 88°03'20" W along the north line thereof a distance of 874.91 feet to a point on the East Line of Southern Heights Subdivision, Muskogee County, State of Oklahoma; thence S 01°39'22" E along said east line a distance of 86.39 feet to the True Point of Beginning; thence N 88°44'14" E along the right-of-way line of U.S. Highway 69 a distance of 225.73 feet; thence S 01°15'48" E along said right-of-way a distance of 147.83 feet to a point of curvature; thence on a curve to the left along said right-of-way having a radius of 562.96 feet and an arc length of 447.08 feet; thence S 38°08'18" E along said right-of-way a distance of 548.85 feet; thence S 07°27'34" E along said right-of-way a distance of 223.72 feet to a point on the South Line of said NE 1/4 NW 1/4; thence S 88°01'47" W along said south line a distance of 821.55 feet; thence N 02°58'52" W a distance of 278.01 feet; thence S 88°12'00" W a distance of 88.32 feet to the Southeast Corner of said Southern Heights Subdivision; thence N 01°39'22" W along the east line of said subdivision a distance of 854.70 feet to the True Point of Beginning. Containing 11.77 acres, more or less.

Ron Huffman
 RON HUFFMAN, P.L.S. (Lic. No. 1020)
Huffman Surveying Company
 CA #1050 (expires 6-30-97)
 600 Emporia St., Ste. C
 Muskogee, Oklahoma 74401
 (918) 682-7798
 DATE: 08/15/96

FOR: Pilkington Visioncare
 Inc.

⊙ = IRON PIN
 X = FENCE
 SCALE: 1" = 200'
 W.O.# 1579H
 FIELD BK. _____
 PAGE _____
 DRAWN BY M.A.M.
 SURVEY BY G.B.