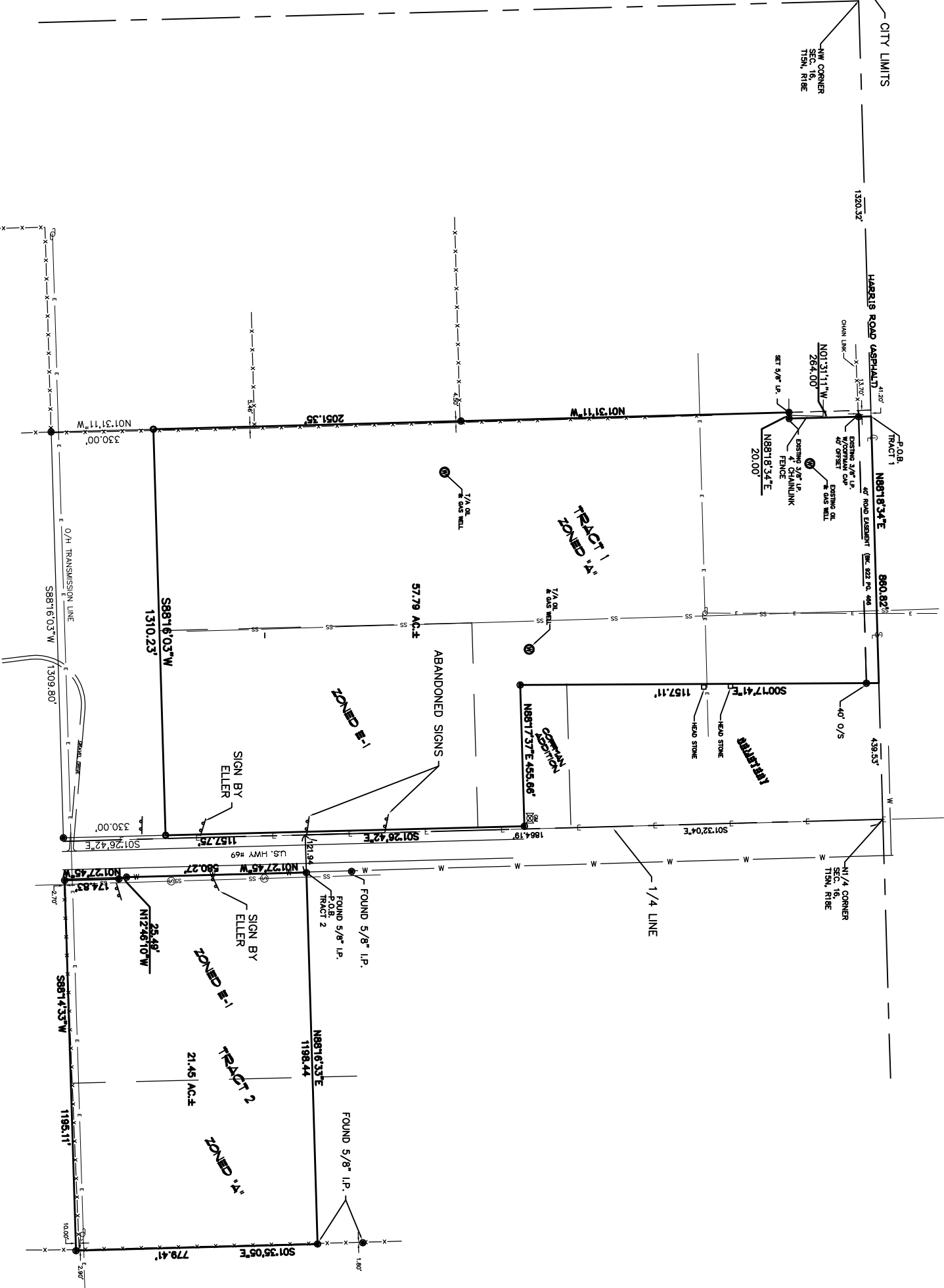


SECTION 16
LOCATION MAP
N.T.S.

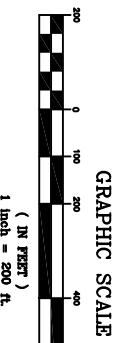
LEGAL DESCRIPTION

TRACT 1
A tract of land in the E1/2 NW1/4 of Section 16, T15N, R18E, I&M, Muskogee County, State of Oklahoma, more particularly described as follows: Commencing at the NW corner of said Section 16; thence N88°18'34"E a distance of 1340.32 feet to the Point of Beginning, said point being 20.00 feet East of the NW corner of said E1/2 NW1/4; thence continuing N88°18'34"E a distance of 860.82 feet to a point on the West boundary of Booker T. Washington Cemetery; thence S00°17'41"E along said West boundary a distance of 1157.11 feet; thence N88°17'37"E a distance of 455.66 feet to a point on the West right-of-way of U.S. Highway 69; thence S01°26'42"E along said West right-of-way a distance of 1157.75 feet; thence S88°16'03"W a distance of 1310.23 feet; thence N01°31'11"W a distance of 2051.35 feet; thence N88°18'34"E a distance of 20.00 feet; thence N01°31'11"W a distance of 264.00 feet to the Point of Beginning. Containing 57.79 acres, more or less, and

TRACT 2
A tract of land in the SW1/4 NE1/4 of Section 16, T15N, R18E, I&M, Muskogee County, State of Oklahoma, more particularly described as follows: Commencing at the NW corner of the NE1/4; thence S01°32'04"E a distance of 1864.19 feet along the west line thereof; thence N88°16'33"E a distance of 121.94 feet to the East right-of-way of U.S. Highway 69 and the Point of Beginning; thence continuing N88°16'33"E a distance of 1198.44 feet; thence S01°35'05"E a distance of 779.41 feet to the SE corner of said SW1/4 NE1/4; thence S88°14'33"W a distance of 1195.11 feet to a point on the East right-of-way of U.S. Highway 69; thence N01°27'45"W along said right-of-way a distance of 174.83 feet; thence N12°46'10"W a distance of 25.49 feet; thence N01°27'45"W a distance of 580.27 feet to the Point of Beginning. Containing 21.45 acres, more or less.



- LEGEND —
- STM — STORM SEWER
 - G — GAS LINES
 - SS — SANITARY SEWER
 - W — WATER LINES
 - E — ELECTRIC LINES
 - T — TELEPHONE LINES
 - ▲ BRASS CAP
 - EXISTING IRON PIN
 - SET 5/8" IRON PIN
 - FENCE
 - × CHISELED "X" IN CONCRETE
 - ⊗ STORM SEWER MANHOLE
 - ⊙ SANITARY SEWER MANHOLE
 - ⊕ FIRE HYDRANT
 - ⊖ WATER VALVE
 - ⊗ WATER METER
 - ⊘ GAS VALVE
 - ⊙ GAS METER
 - ⊖ CURB INLET
 - ⊖ TELEPHONE PEDESTAL
 - ⊖ POWER POLE
 - ⊖ LIGHT POLE
 - ⊖ DOWN GUY
 - ⊖ TREE (DECIDUOUS)
 - ⊖ TREE (CONIFEROUS)
 - ⊖ SIGN (OUTDOORS)



DATE OF LAST REVISION: 8/29/2007	
3 8/23/07 4.01 ACRES DILATED FROM TRACT 2	R.B.C.
2 1/3/03 DRAWING WAS REVIEWED	B.A.S.
1 01/07/02 DRAWING WAS REVIEWED	B.A.S.
LEGAL DESCRIPTION	
TRACT 1	
TRACT 2	
SCALE: AS SHOWN	
DATE: 8/28/04	
DRAWN BY: J.D.R.	
CHECKED BY: J.R.E.	
APPROVED BY: J.R.E.	
PROJECT NO: 03233	
BOOK NO: 145-16	
SHEET NO: 145-16	
SHEET 1 of 1	

PARKS ROYALTY, L.L.C.
Heartland Surveying & Mapping, PLLC
61446 (replaces 6/30/2009)
600 Easting St., Ste. 100
Muskogee, Oklahoma 74401
(918) 686-2222